

How to guide: Install Ricoh printer driver

❖ Note: -

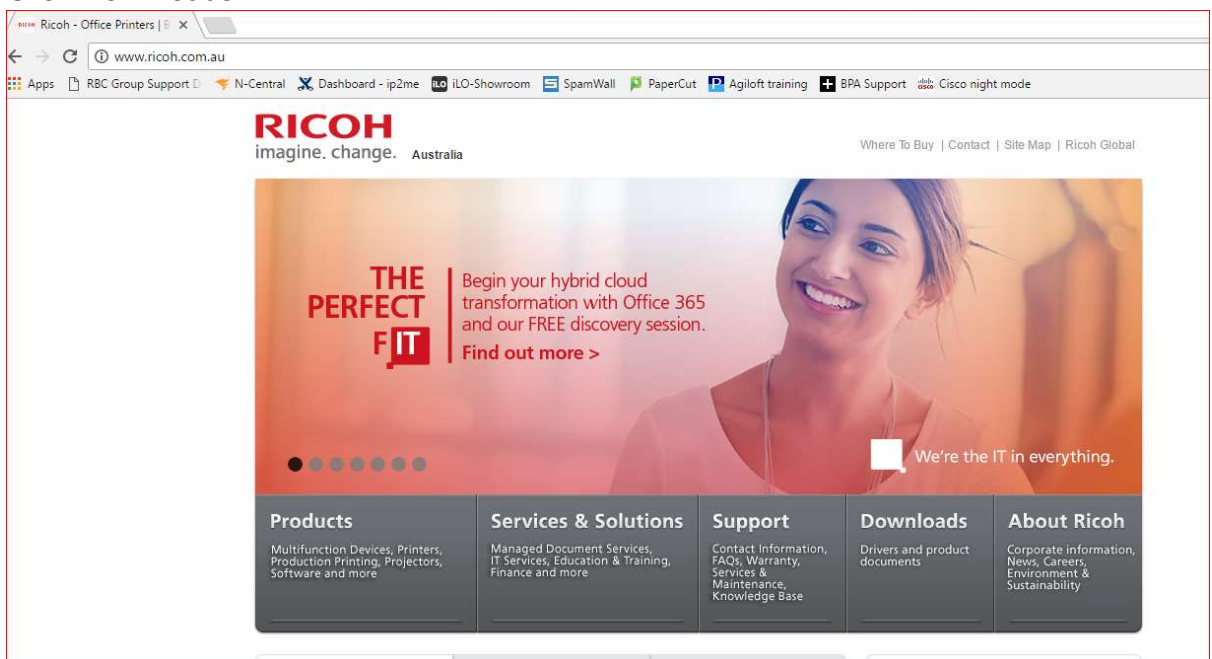
- This how to guide uses Ricoh printer MPC 4503 as an example. Please select the correct model number of Ricoh printer when you are selecting to download the driver in step 6.
- Also, the IP address mentioned in this how to guide is an example. Please type in the correct IP address of your Ricoh printer in step 18.
- If you want to find out the IP address of your Ricoh MFD, you can find it on the device by selecting the 123 / User Tools button, System Settings (or) System Features, Interface Settings, Machine IP V4 Address.

1) On your Windows desktop right click and select new folder. This will create a new folder on your desktop. Right click the New Folder and rename to Ricoh.

2) From your Windows computer open any browser (Internet Explorer, Chrome or Firefox)

3) Go to website www.ricoh.com.au

4) Click Downloads



5) Click Product Drivers

RICOH
imagine. change. Australia

Where To Buy | Contact | Site Map | Ricoh Global

Home Products Services & Solutions Support Downloads About Ricoh

Downloads

Download the latest drivers, operators, user manuals and material safety data sheets for all your Ricoh products. Please note that a new window will open so you can download the files from our global site.

Product Drivers **Product Documents** **Software & Plug-ins**

Further Information
Contact Us
Click here to contact us or locate your nearest Ricoh representative.

Page Top

6) Click Multifunction Devices and select MPC 4503

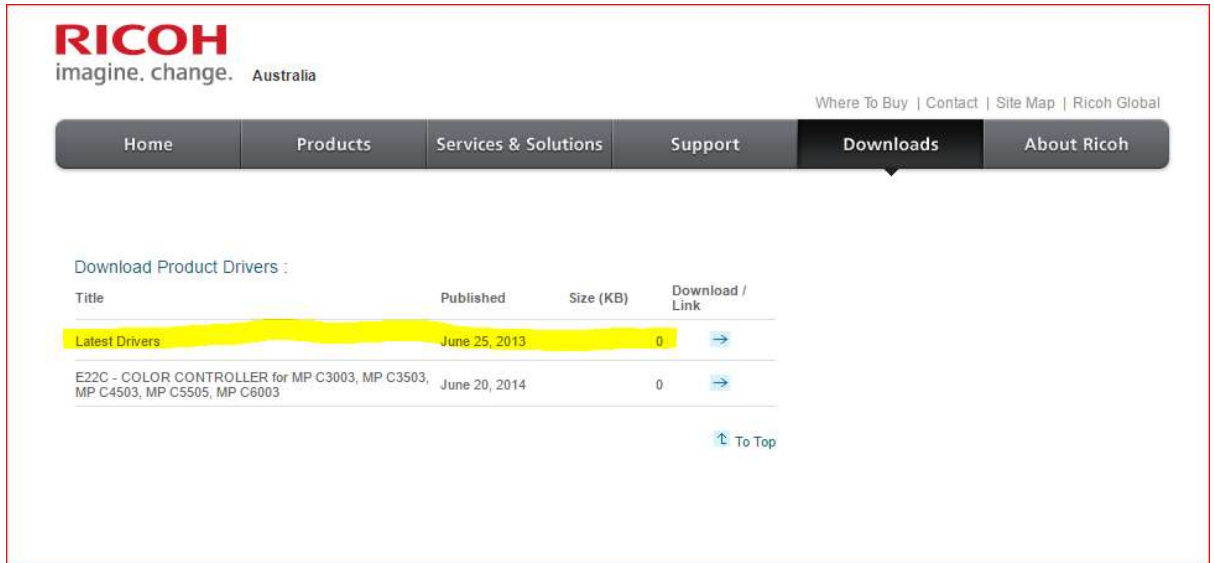
RICOH
imagine. change. Australia

Where To Buy | Contact | Site Map | Ricoh Global

Home Products Services & Solutions Support Downloads About Ricoh

MP C2800	MP C300	MP C300SR	MP C3000	MP C3001
MP C3002	MP C3003SP	MP C3004	MP C305SPF	MP C306ZSPF
MP C307SPF	MP C3300	MP C3500	MP C3501	MP C3502
MP C3503SP	MP C3504	MP C400	MP C400SR	MP C4000
MP C406ZSPF	MP C4500	MP C4501	MP C4502A	MP C4503SP
MP C4504	MP C5000	MP C5501A	MP C5502A	MP C5503SP
MP C6000	MP C6003SP	MP C6004	MP C6501	MP C6502SP
MP C7500	MP C7501	MP C8002SP		

7) Click the blue arrow on latest drivers



RICOH
imagine. change. Australia

Where To Buy | Contact | Site Map | Ricoh Global

Home Products Services & Solutions Support **Downloads** About Ricoh

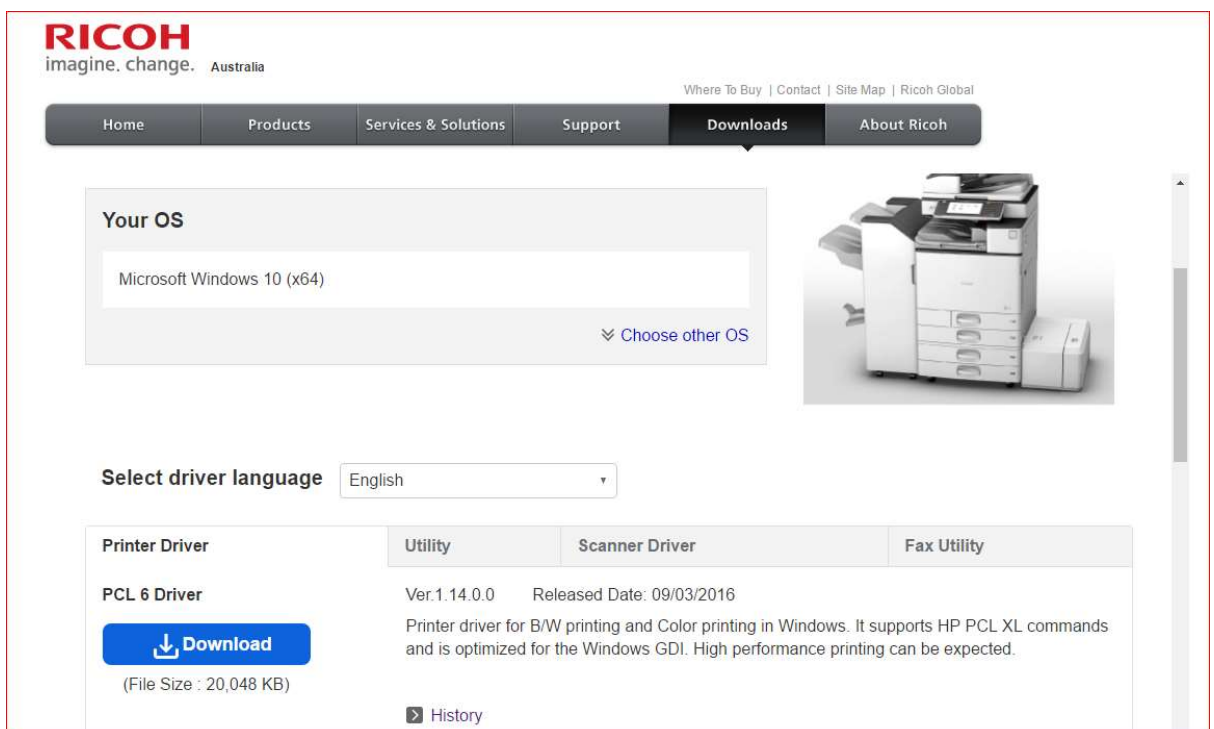
Download Product Drivers :

Title	Published	Size (KB)	Download / Link
Latest Drivers	June 25, 2013	0	→
E22C - COLOR CONTROLLER for MP C3003, MP C3503, MP C4503, MP C5505, MP C6003	June 20, 2014	0	→

[↑ To Top](#)

8) You will see Your Operating System Your OS on Windows is automatically selected.

9) Click download on PCL 6 driver.



RICOH
imagine. change. Australia

Where To Buy | Contact | Site Map | Ricoh Global

Home Products Services & Solutions Support **Downloads** About Ricoh

Your OS

Microsoft Windows 10 (x64)

[Choose other OS](#)

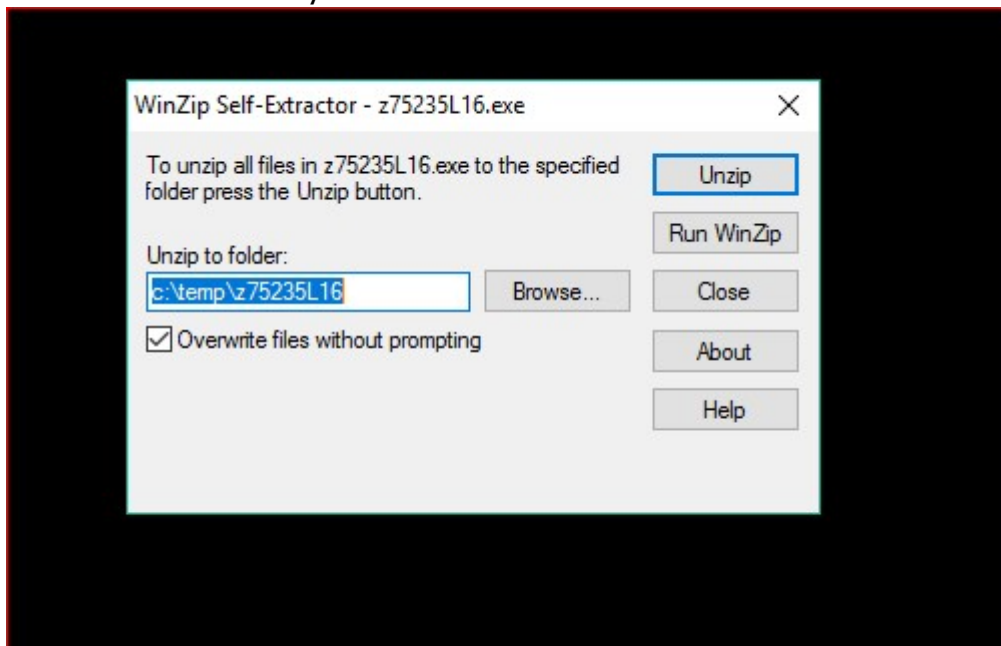
Select driver language English

Printer Driver	Utility	Scanner Driver	Fax Utility
PCL 6 Driver Download (File Size : 20,048 KB)	Ver.1.14.0.0 Released Date: 09/03/2016 Printer driver for B/W printing and Color printing in Windows. It supports HP PCL XL commands and is optimized for the Windows GDI. High performance printing can be expected. History		

- 10) This will download an EXE file named z followed by some numbers. Depending upon your browser and download location set on your browser, browse to the download folder and double click the file.

As an example if you are using Chrome browser you can click the file on the left and run the file.

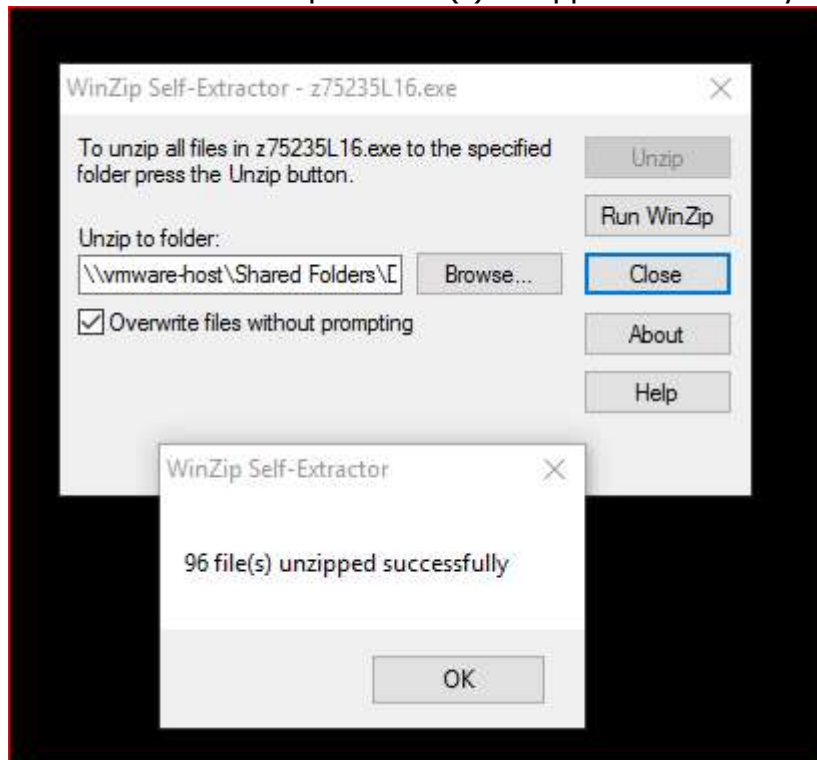
See screenshot once you click the file.



- 11) Click browse on the WinZip Self-Extractor and select desktop, select the Ricoh folder created in step 1 and click OK

- 12) Click Unzip. This will extract the EXE file to your desktop with the folder name prefixed z with some numbers followed after z.

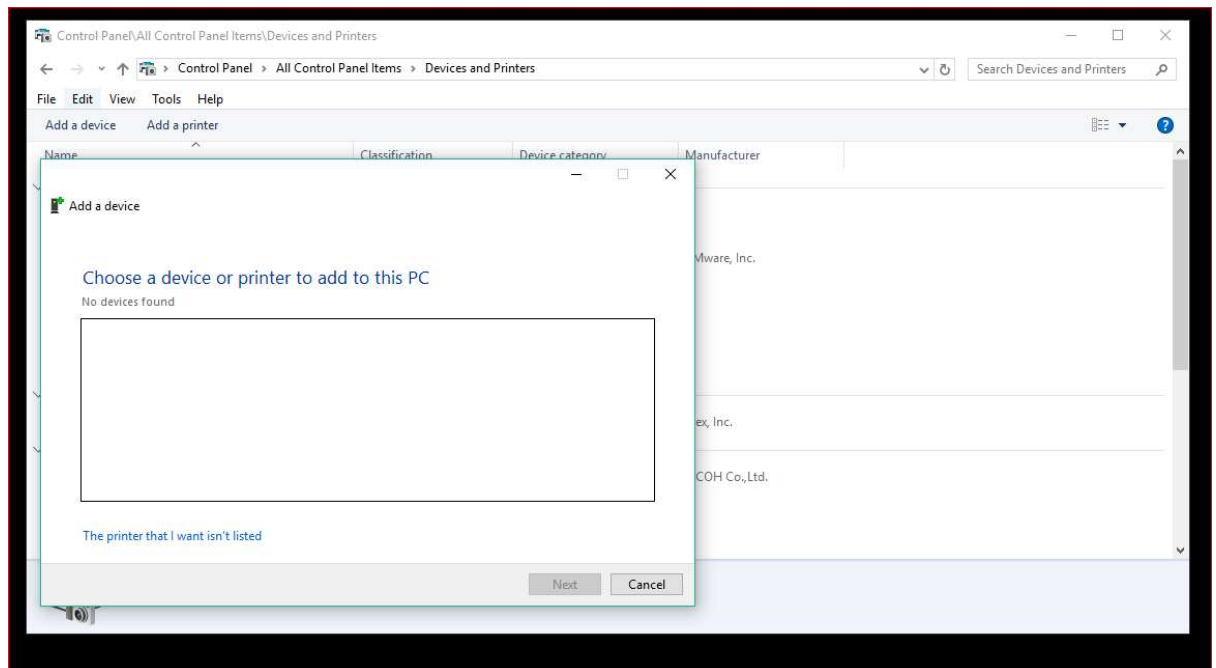
See screenshot example 96 file(s) unzipped successfully.



- 13) Click OK and click Close.

- 14) Click Start in Windows and type devices and printers. You can also go to Control Panel and click Devices and Printers.

15) Click add printer and select the printer I want is not listed



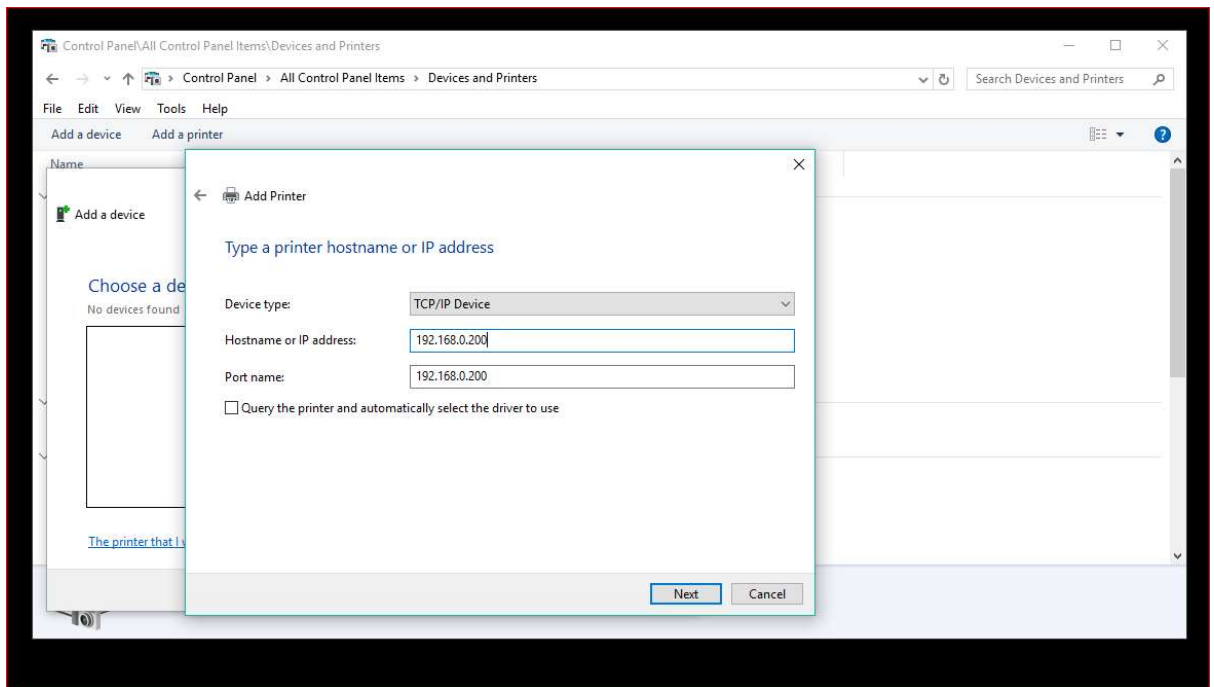
16) Click Add a printer using a TCP/IP address or hostname and click Next

17) Select TCP/IP in Device type.

18) Type 192.168.0.200 in Hostname or IP address

19) Untick 'Query the printer and automatically select the driver to use' if it is ticked

20) Click Next



21) Click Have Disk.

22) Click Browse.

23) Click Desktop

24) Click Ricoh folder which you created in Step 1.

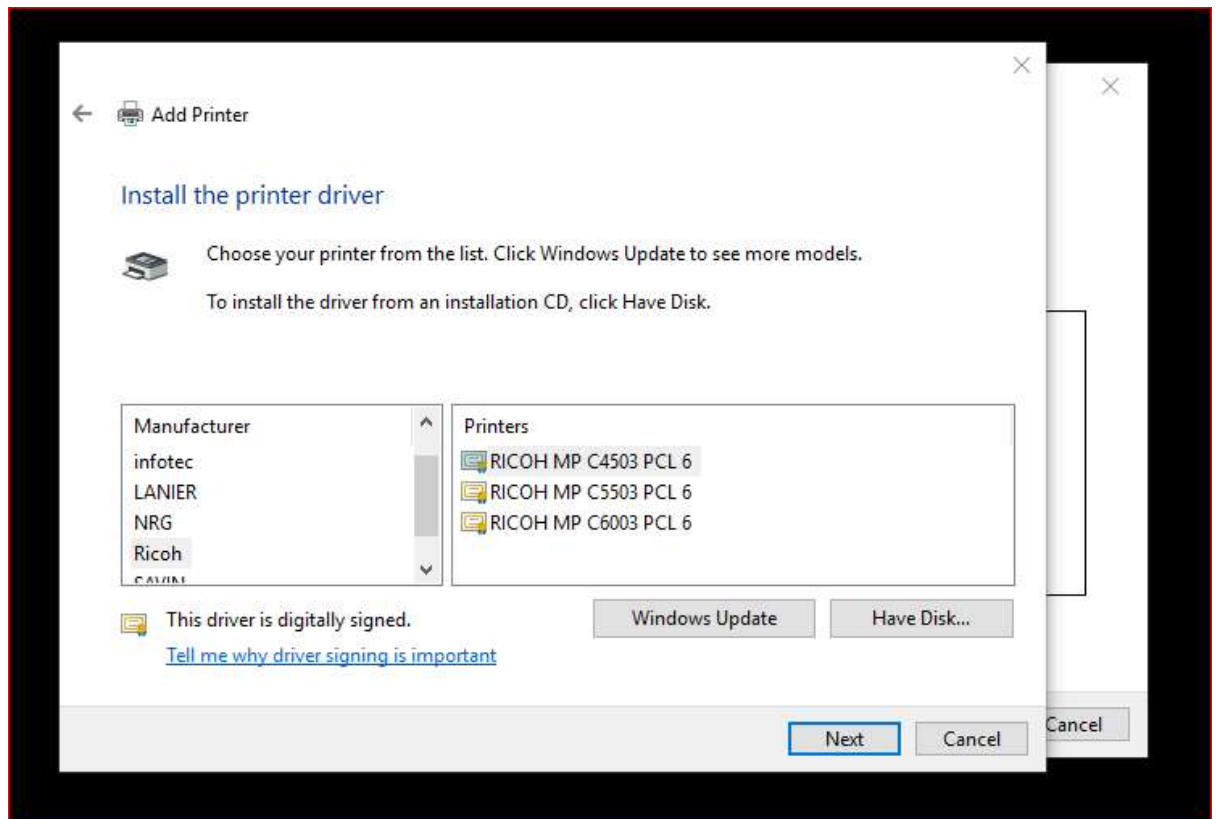
25) Click Open

26) Double click Disk1

27) Double click OEMSETUP.INF

28) Click OK

29) Select Ricoh under Manufacturer and Select Ricoh MPC 4503 PCL6



30) Click Next

31) If user Access Control Pop up and prompt to install the driver click Yes

32) Click Next on Printer Sharing 'Do not share this printer'

33) Click Finish.

←  Add Printer

You've successfully added RICOH MP C4503 PCL 6

To check if your printer is working properly, or to see troubleshooting information for the printer, print a test page.

[Print a test page](#)

Finish

Cancel

Cancel